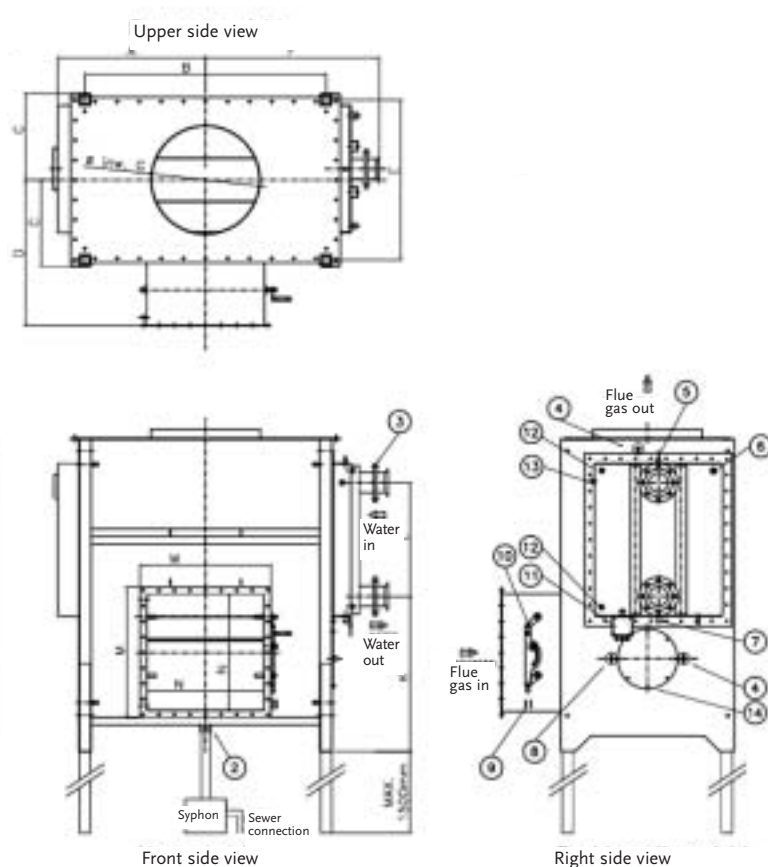


Dimension chart

1. Measuring point 1/4"
2. Condensate drain 2x2"
3. Push-on flanges ND 16 alu.
4. Fluegas thermometer
5. De-aerator 1/4"
6. Overflow valve
7. Drain 1/2"
8. Pressure switch
9. Limit switch
10. Valve section lever
11. Wiring box
12. Water thermometer
13. Max. temperature safety
14. Inspection cover



Measurements in mm

Type:	A	B	C	D	E	F	G	H	I	J	K	L	MxM	NxN
ZRC 1.0	836	1364	281	519	489	982	360	1394	446	948	740	405	540	460
ZRC 1.5	836	1364	311	549	549	982	360	1514	446	1068	740	525	540	460
ZRC 2.0	836	1364	341	578	609	982	460	1654	516	1138	820	585	640	560
ZRC 2.5	836	1364	401	638	729	982	510	1654	516	1138	820	585	640	560
ZRC 3.0	836	1364	461	798	849	982	610	1714	561	1153	880	585	740	660
ZRC 4.0	836	1364	491	828	909	982	610	1774	561	1213	880	645	740	660
ZRC 5.0	1076	1844	491	908	909	1222	710	1854	626	1228	960	645	870	740
ZRC 6.0	1187	1844	521	938	969	1317	710	1854	626	1228	960	645	870	740
ZRC 7.0	1187	1844	595	1099	1119	1317	760	1934	665	1269	990	680	890	970
ZRC 8.0	1247	1844	655	1159	1239	1377	760	1934	665	1269	990	680	890	970
ZRC 10.0	1442	2234	655	1199	1239	1572	810	2034	715	1319	1090	680	990	1070

Subject to change ©19-10-2004



A BRIGHT FUTURE WITH ZANTINGH

ZANTINGH TOTAL ECO FLUE GAS CONDENSER



Lowest investment, highest efficiency



A BRIGHT FUTURE WITH ZANTINGH

Zantingh B.V., Aarbergenweg 9, 1435 CA Rijsenhout
 P.O. Box 255, 1430 AG Aalsmeer, the Netherlands
 Telephone: (+31) (0)297 - 21 91 00, Fax: (+31) (0)297 - 21 91 99
 Internet: www.zantingh.com, E-mail: info@zantingh.com



ISO 9001
 registered by
 GASTEC

VCA
 Certified by
 GASTEC

The new Total Eco Compact flue gas condenser

The stack loss is limited to the bare minimum when a Zantingh Total Eco has been placed between your boiler and stack. The available felt heat will be exchanged and even the condensation

heat will be completely utilised with return water temperatures lower than 58°C. This entails a maximum output! The Total Eco flue gas condenser can be placed behind gas-fired pressure boilers with a maximum flue gas temperature of 250°C. The flue gas condenser will be cooled using central heating water at

a maximum temperature of 90°C. The maximum working pressure is 3 bar.

Total Eco Compact

(type ZRC 1.0 up to 10.0: 1,160 – 11,600 kW boiler capacity)

The Zantingh Total Eco Compact is a compact flue gas condenser with an integrated flue gas valve and bypass duct.

The heat exchange block can, thus, be closed off. This guarantees that the boiler can remain operational when disasters occur, when temporarily burning fuels other than natural gas or when the water flow over the exchange block is not constant. Due to its compact construction, only a very limited space is needed to set up the condenser.

The supporting legs supplied as standard make it easy to mount behind the boiler. De Total Eco

Compact can be supplied for one or two water circuits; these are called the single or combination version. The inlet side (flue gas) has been provided with a square flange connection. The flue gas outlet side has a round connection for the easy assembly of a single aluminium flue tube. A plug door has been fitted for optimal accessibility. The condenser exchange block has been placed vertically in the flue gas flow and can be disassembled. This construction limits the flue gas side back pressure of the condenser. The heat exchange block is constantly flushed by the condensate which decreases the amount of pollution within the equipment.

High-quality materials

Zantingh only uses high-quality materials for the production of the condenser. The heat exchange block of the Zantingh Total Eco can, for example, be fitted as a removable section in a casing made of stainless steel. The block has been constructed from stainless-steel tubes welded to a stainless steel tube plate. The tubes are provided with aluminium fins. This construction allows the heat in the flue gas to be optimally passed on to the counterflowing water. The tube plate is provided with a stainless steel cover with PN 16 push-on flanges. The complete construction has, therefore, the best possible resistance to aggressive condensation.

Standard Total Eco Compact delivery:

- Casing with flue gas condenser block based on standard material specifications and PN 16 flange connections.
- Bypass channel with integrated bypass for diverting flue gas, for example, for a combined gas oil burner.
- Valve section which shuts off either the bypass channel or the flue gas condenser. The operation

is manual (a driven version can also be supplied).

- A set of thermometers consisting of:
 - A flue gas inlet and outlet thermometer.
 - A water inlet and outlet thermometer.
- Safety equipment consisting of:
 - A maximum temperature safety (for each water circuit).
 - A pressure switch for the flue gas side section.
 - An overflow valve for overpressure protection.
 - A limit switch on the flue gas valve.
- De-aerators and drains.
- A support structure consisting of adjustable legs.



The Zantingh "EASY-CONNECT" system

Zantingh is proud to introduce the "easy-connect" system to be used when mounting a CO₂ dosage system directly on the flue gas condenser. It has never been this easy to mount a CO₂ unit directly next to a flue gas condenser. The CO₂ unit is supplied by Zantingh on a mounting frame.

This frame can be mounted at a specific height using, for example, a fork-lift truck. The CO₂ unit is connected to the condenser using a fitting piece which is mounted on the condenser. The frame is supported by the supplied support legs. Everything is premounted which makes assembly **very easy**.

Other advantages are that the frame can be placed either to the left or to the right of the condenser, that multiple frames can be connected in series and that the corresponding stack with roof lead-through can be delivered as standard.

